

READ AND FOLLOW ALL SAFETY INSTRUCTIONS! SAVE THESE INSTRUCTIONS AND DELIVER TO OWNER AFTER INSTALLATION

- To reduce the risk of death, personal injury or property damage from fire, electric shock, falling parts, cuts/abrasions, and other hazards please read all warnings and instructions included with and on the fixture box and all fixture labels.
- Before installing, servicing, or performing routine maintenance upon this equipment, follow these general precautions.
- Installation and service of luminaires should be performed by a **qualified licensed electrician**.
- Maintenance of the luminaires should be performed by person(s) familiar with the luminaires' construction and operation and any hazards involved. Regular fixture maintenance programs are recommended.
- It will occasionally be necessary to clean the outside of the refractor/lens. Frequency of cleaning will depend on ambient dirt level and minimum light output which is acceptable to user. Refractor/lens should be washed in a solution of warm water and any mild, non-abrasive household detergent, rinsed with clean water and wiped dry. Should optical assembly become dirty on the inside, wipe refractor/lens and clean in above manner, replacing damaged gaskets as necessary.
- **DO NOT INSTALL DAMAGED PRODUCT!** This luminaire has been properly packed so that no parts should have been damaged during transit. Inspect to confirm. Any part damaged or broken during or after assembly should be replaced.
- If the lamp is marked (Hg) it contains Mercury. Follow all disposal laws. For more information on how to recycle LED electronic product please visit www.epa.gov.
- These instructions do not purport to cover all details or variations in equipment nor to provide every possible contingency to meet in connection with installation, operation, or maintenance. Should further information be desired or should particular problems arise which are not covered sufficiently for the purchaser's or owner's purposes, this matter should be referred to Acuity Brands Lighting, Inc.



WARNING RISK OF ELECTRIC SHOCK

- Disconnect or turn off power before installation or servicing.
- Verify that supply voltage is correct by comparing it with the luminaire label information.
- Make all electrical and grounded connections in accordance with the National Electrical Code (NEC) and any applicable local code requirements.
- All wiring connections should be capped with UL approved recognized wire connectors.



WARNING RISK OF BURN

- Allow lamp/fixture to cool before handling. Do not touch hot lens, lamp, guard, or enclosure.
- Do not exceed maximum wattage marked on luminaire label.
- Follow all lamp manufacturer's warnings, recommendations and restrictions on lamp operation including but not limited to: ballast type, burning position, replacement, and recycling.



WARNING RISK OF INJURY

- Wear gloves and safety glasses at all times when removing luminaire from carton, installing, servicing or performing maintenance.
- Avoid direct eye exposure to the light source while it is on.



WARNING RISK OF INJURY

- Keep combustible and other materials that can burn away from lamp/lens.
- Do not operate in close proximity to persons, combustible materials or substances affected by heat or drying.



WARNING RISK OF PRODUCT DAMAGE

- Never connect components under load.
- Do not mount or support these fixtures in a manner that can cut the outer jacket or damaged wire insulation.
- Never connect an LED product to an unapproved dimmer pack. Contact ABL directly for any dimmers not specifically recommended for the product.
- Unless individual product specifications deem otherwise: Allow for some volume of airspace around fixture. Avoid covering LED fixtures with insulation, foam, or other material that will prevent convection or conduction cooling.
- Unless individual product specifications deem otherwise: Maximum ambient temperature is 90°C. Do not operate fixture at temperatures higher than this.
- Unless individual product specifications deem otherwise: Never mount in places where fixture will be exposed to rain, high humidity, extreme temperature changes, or restricted ventilation.
- LED products are Polarity Sensitive. Ensure proper Polarity before installation. • Electrostatic Discharge (ESD): ESD can damage LED fixtures. Personal ground-ing equipment must be worn during all installation or servicing of the unit.
- Do not touch individual electrical components as this can cause ESD, shorten lamp life, or alter performance.
- There are no user-serviceable parts inside the unit. Do not rewire, reconfigure, or modify the unit or attempt any repairs yourself. Additionally, field replacement of the LED assembly or lamps is not allowed by UL standards at this time. In the unlikely event, your unit may require service, stop using the unit immediately and contact an ABL representative.

All luminaires that contain electronic devices that generate frequencies above 9kHz from any component within the luminaire comply with one of the following Part 15 of the FCC Rules. Operation is subject to the following two conditions:

- (1) This device may not cause harmful interference
- (2) This device must accept any interference received, including interference that may cause undesired operation.

This device complies with Part 18 of the FCC Rules but may cause interference with cordless and cell phones, radios, televisions, and other electronic devices. To correct the problem move the device away from the luminaire or plug into a different outlet. This product may cause interference to radio equipment and should not be installed near maritime safety communications equipment or other critical navigation or communications equipment operating between 0.45-30MHz.

Failure to follow any of these instructions could void product warranties. For a complete listing of product Terms and Conditions, please visit www.acuitybrands.com.

OUR BRANDS

INDOOR/OUTDOOR: Lithonia Lighting, Carandini, Holophane, RELOC, Luimnis, Luminaire Led, Alight.

INDOOR LIGHTING: Gotham, Mark Architectural Lighting, Peerless, Renaissance Lighting, Winona Lighting, Eureka, Indy, Healthcare Lighting, Aculux.

OUTDOOR LIGHTING: American Electric Lighting, Antique Street Lamps, Hydrel, Tersen, Cyclone.

CONTROLS: DARK TO LIGHT, Lighting Control & Design, ROAM, Sensor Switch, Synergy, Fresco, Blue Box, nLight, Pathway, Xpoint Wireless.

Acuity Brands Lighting, Inc. assumes no responsibility for claims arising out of improper or careless installation or handling of its products.

ABL LED General Warnings, Form No. 503.203 © 2010 Acuity Brands Lighting, Inc. All rights reserved. 12/01/10

CAN ICES-005 (A) / NMB-005 (A)

FCC Compliance Statement

This device complies with part 15 of the FCC Rules. Operation is subject to the following two conditions: (1) This device may not cause harmful interference, and (2) this device must accept any interference received, including interference that may cause undesired operation. This equipment has been tested and found to comply with the limits for a Class A digital device, pursuant to part 15 of the FCC Rules. These limits are designed to provide reasonable protection against harmful interference when the equipment is operated in a commercial environment. This equipment generates, uses, and can radiate radio frequency energy and, if not installed and used in accordance with the instruction manual, may cause harmful interference, to radio communications. Operation of this equipment in a residential area is likely to cause harmful interference in which case the user will be required to correct their interference at their own expense.

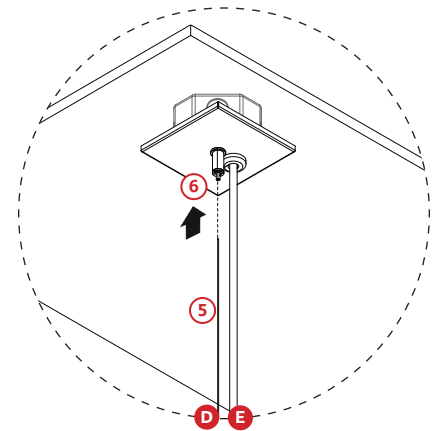
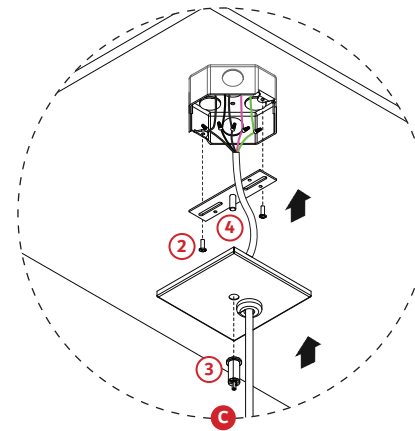
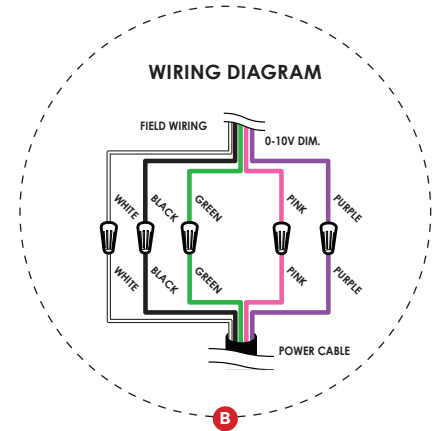
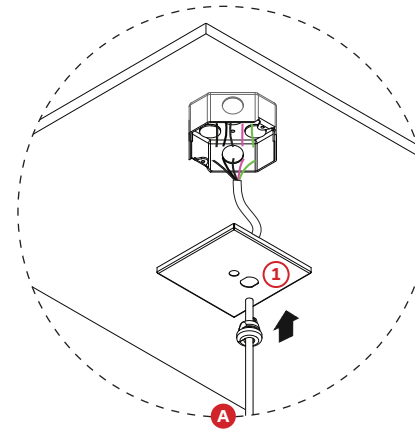
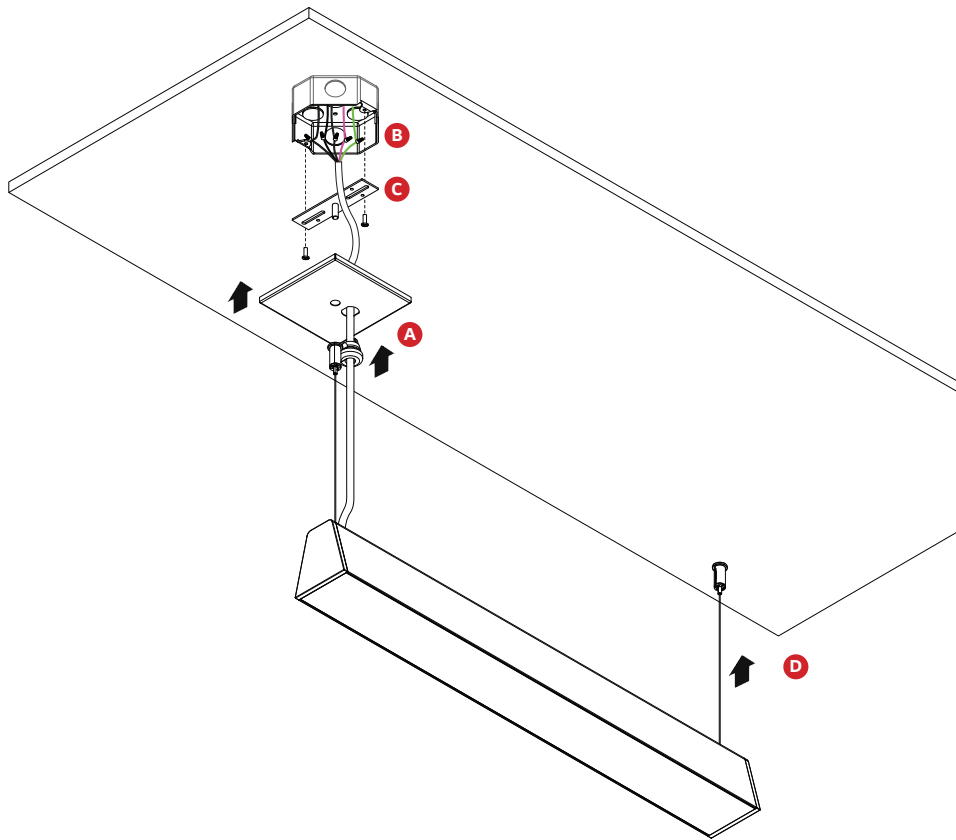
ISED Canada Statement

This class A lighting equipment complies with innovation, Science and Economic Development (ISED) Canada Standard for radio interference-causing equipment ICES-005, 5th edition.

Déclaration pour ISDE Canada

Ce matériel d'éclairage de classe A est conforme avec la norme sur le matériel brouilleur radio NMB-005, 5ième édition, publié par innovation, science et développement économique (ISDE) Canada.

1



INSTALLATION STEPS

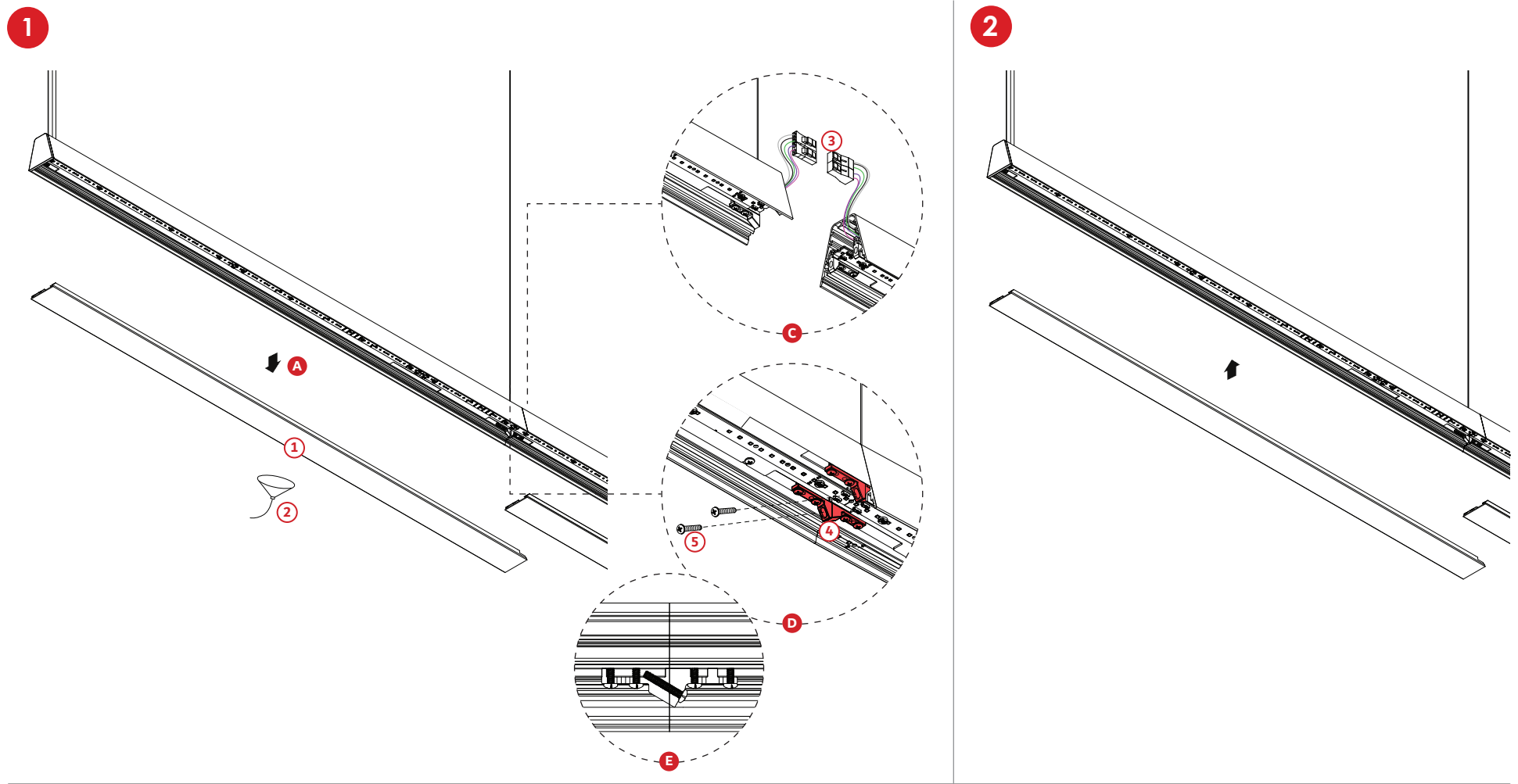


WARNING: Risk of fire and electrical shock - Fixture to be installed by two qualified electricians according to local codes and ordinances.
WARNING: Ensure proper handling of LEDs to limit common problems including: broken connection, loose wiring and damage from electrostatic discharge.

1

- [A] - Pass power cable through the canopy clearance hole. [1]
- [B] - Power feed connections: White (neutral), Black (line), Green (ground). If dimming required: Purple (0-10V +), Pink (0-10V -). Refer to wiring diagram.
- [C] - Attach the bracket bar to the junction box with screws [2] (by others). Attach the canopy to the bracket bar by attaching gripper [3] to bracket bar stud #1/4-20 [4]. Fix second cable gripper to the ceiling following mounting point distances on page 6.
- [D] - Lift fixture and attach aircraft cable [5] to grippers [6].
- [E] - Level the fixture and adjust aircraft cable height by depressing bottom pin of grippers. The excess of aircraft cable will come out through the slot on the side of the gripper. Cut the excess of aircraft cable.

WARNING: - DO NOT LET GO OF FIXTURE UNTIL IT IS COMPLETELY SECURED AND LEVELED.
 - DO NOT OVER TORQUE GRIPPER.
 - FOR MORE SEGMENT DIMENSIONS PLEASE REFER TO DIMENSIONS ON PAGE 6.



INSTALLATION STEPS

WARNING: Risk of fire and electrical shock - Fixture to be installed by two qualified electricians according to local codes and ordinances.
WARNING: Ensure proper handling of LEDs to limit common problems including: broken connection, loose wiring and damage from electrostatic discharge.

1

ROWS

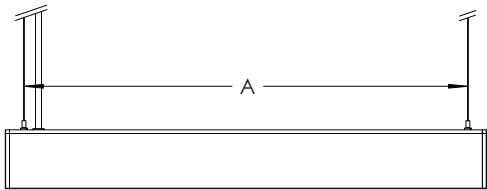
- [A] - Remove the lens [1]. Apply suction cup [2] (provided) to one end and carefully pull the lens out.
- [B] - When rows are ordered, hang fixtures as they were standalone fixtures. Refer to page 4.
- [C] - Connect electrical wire harnesses [3].
- [D] - Align fixtures and connect fixture housings with joiners [4] placed inside by fastening with provided #8-32 screws [5].
- [E] - Fix screws until no gap between fixtures remains.

2

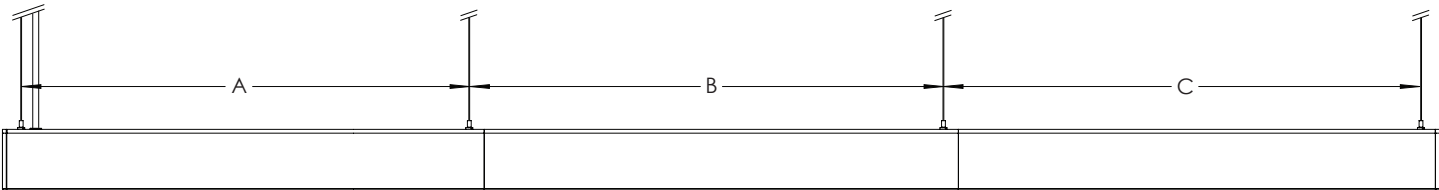
- [A] - Reinstall the lens.

Recommanded mounting points

Standalone



Row



DIMENSION	DESCRIPTION	MOUNTING POINTS DISTANCE						
		2'	3'	4'	5'	6'	7'	8'
A	Endcap to endcap/ First fixture	23.00"	35.00"	47.00"	59.00"	71.00"	83.00"	95.00"
B	Middle fixture	23.50"	35.50"	47.50"	59.50"	71.50"	83.50"	95.50"
C	Last fixture	24.50"	36.50"	48.50"	60.50"	72.50"	84.50"	96.50"

Mounting points are not adjustable

INSTALLATION STEPS

WARNING: Risk of fire and electrical shock - Fixture to be installed by qualified electrician according to local codes and ordinances.

WARNING: Ensure proper handling of LEDs to limit common problems including: broken connection, loose wiring and damage from electrostatic discharge.