

### READ AND FOLLOW ALL SAFETY INSTRUCTIONS! SAVE THESE INSTRUCTIONS AND DELIVER TO OWNER AFTER INSTALLATION

- To reduce the risk of death, personal injury or property damage from fire, electric shock, falling parts, cuts/abrasions, and other hazards please read all warnings and instructions included with and on the fixture box and all fixture labels.
- Before installing, servicing, or performing routine maintenance upon this equipment, follow these general precautions.
- Installation and service of luminaires should be performed by a **qualified licensed electrician**.
- Maintenance of the luminaires should be performed by person(s) familiar with the luminaires' construction and operation and any hazards involved. Regular fixture maintenance programs are recommended.
- It will occasionally be necessary to clean the outside of the refractor/lens. Frequency of cleaning will depend on ambient dirt level and minimum light output which is acceptable to user. Refractor/lens should be washed in a solution of warm water and any mild, non-abrasive household detergent, rinsed with clean water and wiped dry. Should optical assembly become dirty on the inside, wipe refractor/lens and clean in above manner, replacing damaged gaskets as necessary.
- **DO NOT INSTALL DAMAGED PRODUCT!** This luminaire has been properly packed so that no parts should have been damaged during transit. Inspect to confirm. Any part damaged or broken during or after assembly should be replaced.
- If the lamp is marked (Hg) it contains Mercury. Follow all disposal laws. For more information on how to recycle LED electronic product please visit [www.epa.gov](http://www.epa.gov).
- These instructions do not purport to cover all details or variations in equipment nor to provide every possible contingency to meet in connection with installation, operation, or maintenance. Should further information be desired or should particular problems arise which are not covered sufficiently for the purchaser's or owner's purposes, this matter should be referred to Acuity Brands Lighting, Inc.



#### WARNING RISK OF ELECTRIC SHOCK

- Disconnect or turn off power before installation or servicing.
- Verify that supply voltage is correct by comparing it with the luminaire label information.
- Make all electrical and grounded connections in accordance with the National Electrical Code (NEC) and any applicable local code requirements.
- All wiring connections should be capped with UL approved recognized wire connectors.



#### WARNING RISK OF BURN

- Allow lamp/fixture to cool before handling. Do not touch hot lens, lamp, guard, or enclosure.
- Do not exceed maximum wattage marked on luminaire label.
- Follow all lamp manufacturer's warnings, recommendations and restrictions on lamp operation including but not limited to: ballast type, burning position, replacement, and recycling.



#### WARNING RISK OF INJURY

- Wear gloves and safety glasses at all times when removing luminaire from carton, installing, servicing or performing maintenance.
- Avoid direct eye exposure to the light source while it is on.



#### WARNING RISK OF INJURY

- Keep combustible and other materials that can burn away from lamp/lens.
- Do not operate in close proximity to persons, combustible materials or substances affected by heat or drying.



### WARNING RISK OF PRODUCT DAMAGE

- Never connect components under load.
- Do not mount or support these fixtures in a manner that can cut the outer jacket or damaged wire insulation.
- Never connect an LED product to an unapproved dimmer pack. Contact ABL directly for any dimmers not specifically recommended for the product.
- Unless individual product specifications deem otherwise: Allow for some volume of airspace around fixture. Avoid covering LED fixtures with insulation, foam, or other material that will prevent convection or conduction cooling.
- Unless individual product specifications deem otherwise: Maximum ambient temperature is 90°C. Do not operate fixture at temperatures higher than this.
- Unless individual product specifications deem otherwise: Never mount in places where fixture will be exposed to rain, high humidity, extreme temperature changes, or restricted ventilation.
- LED products are Polarity Sensitive. Ensure proper Polarity before installation. • Electrostatic Discharge (ESD): ESD can damage LED fixtures. Personal ground-ing equipment must be worn during all installation or servicing of the unit.
- Do not touch individual electrical components as this can cause ESD, shorten lamp life, or alter performance.
- There are no user-serviceable parts inside the unit. Do not rewire, reconfigure, or modify the unit or attempt any repairs yourself. Additionally, field replacement of the LED assembly or lamps is not allowed by UL standards at this time. In the unlikely event, your unit may require service, stop using the unit immediately and contact an ABL representative.

All luminaires that contain electronic devices that generate frequencies above 9kHz from any component within the luminaire comply with one of the following Part 15 of the FCC Rules. Operation is subject to the following two conditions:

- (1) This device may not cause harmful interference
- (2) This device must accept any interference received, including interference that may cause undesired operation.

This device complies with Part 18 of the FCC Rules but may cause interference with cordless and cell phones, radios, televisions, and other electronic devices. To correct the problem move the device away from the luminaire or plug into a different outlet. This product may cause interference to radio equipment and should not be installed near maritime safety communications equipment or other critical navigation or communications equipment operating between 0.45-30MHz.

Failure to follow any of these instructions could void product warranties. For a complete listing of product Terms and Conditions, please visit [www.acuitybrands.com](http://www.acuitybrands.com).

### OUR BRANDS

**INDOOR/OUTDOOR:** Lithonia Lighting, Carandini, Holophane, RELOC, Luimnis, Luminaire Led, Alight.

**INDOOR LIGHTING:** Gotham, Mark Architectural Lighting, Peerless, Renaissance Lighting, Winona Lighting, Eureka, Indy, Healthcare Lighting, Aculux.

**OUTDOOR LIGHTING:** American Electric Lighting, Antique Street Lamps, Hydrel, Tersen, Cyclone.

**CONTROLS:** DARK TO LIGHT, Lighting Control & Design, ROAM, Sensor Switch, Synergy, Fresco, Blue Box, nLight, Pathway, Xpoint Wireless.

**Acuity Brands Lighting, Inc. assumes no responsibility for claims arising out of improper or careless installation or handling of its products.**

ABL LED General Warnings, Form No. 503.203 © 2010 Acuity Brands Lighting, Inc. All rights reserved. 12/01/10

## CAN ICES-005 (A) / NMB-005 (A)

### FCC Compliance Statement

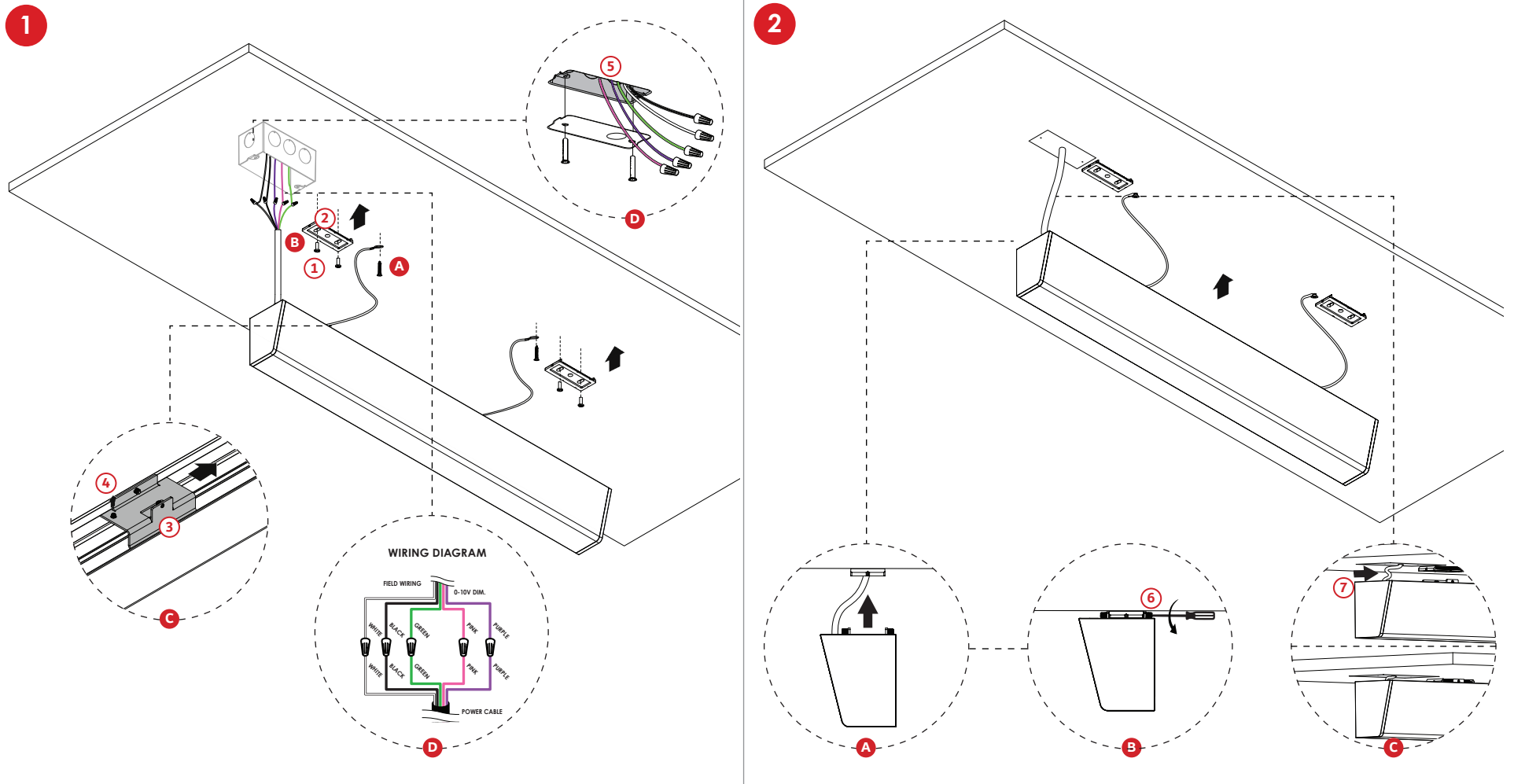
This device complies with part 15 of the FCC Rules. Operation is subject to the following two conditions: (1) This device may not cause harmful interference, and (2) this device must accept any interference received, including interference that may cause undesired operation. This equipment has been tested and found to comply with the limits for a Class A digital device, pursuant to part 15 of the FCC Rules. These limits are designed to provide reasonable protection against harmful interference when the equipment is operated in a commercial environment. This equipment generates, uses, and can radiate radio frequency energy and, if not installed and used in accordance with the instruction manual, may cause harmful interference, to radio communications. Operation of this equipment in a residential area is likely to cause harmful interference in which case the user will be required to correct their interference at their own expense.

### ISED Canada Statement

This class A lighting equipment complies with innovation, Science and Economic Development (ISED) Canada Standard for radio interference-causing equipment ICES-005, 5th edition.

### Déclaration pour ISDE Canada

Ce matériel d'éclairage de classe A est conforme avec la norme sur le matériel brouilleur radio NMB-005, 5ième édition, publié par innovation, science et développement économique (ISDE) Canada.



## INSTALLATION STEPS



**WARNING:** Risk of fire and electrical shock - Fixture to be installed by two qualified electricians according to local codes and ordinances.

**WARNING:** Ensure proper handling of LEDs to limit common problems including: broken connection, loose wiring and damage from electrostatic discharge.

1

[A] - Attach safety tethers to ceiling with #8 screw (by others).

[B] - With two #8 flat head screws [1] (by others), attach surface mount brackets [2] to the ceiling using anchors (by others). Refer to mounting block guide next page for block mount length. Make sure mount brackets are properly fastened and flush to the ceiling.

[C] - Align mounting blocks [3] on the fixture with the surface mount block by loosening the top set screw [4] then fix blocks in position by fastening the top set screw.

[D] - Pass power feed from the fixture through the J-box cover plate (by others) and J-box mounting plate. A single gang J-box [5] is recommended for better coverage from fixtures. Make connections: White (neutral), Black (line), Green (ground). If dimming required: Purple (0-10V +), Gray (0-10V -). Refer to wiring diagram.

**WARNING:**

- DO NOT LET GO OF FIXTURE UNTIL IT IS COMPLETELY SECURED AND LEVELED.

2

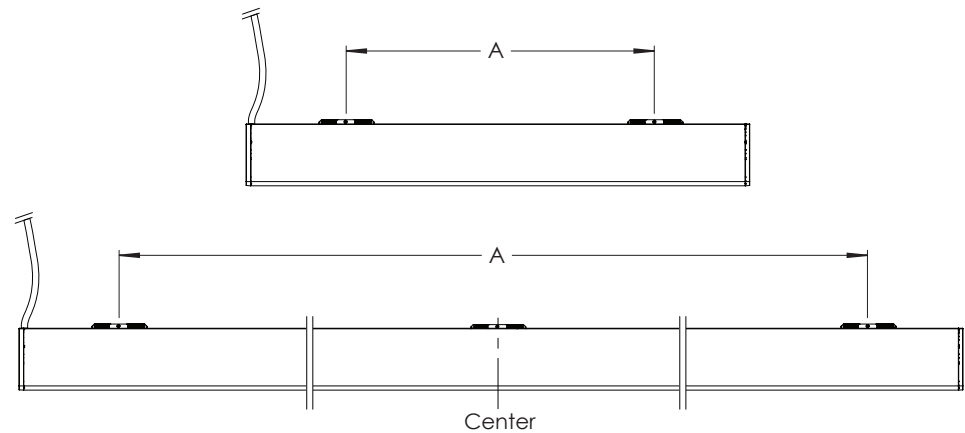
[A] - Slide surface brackets into surface mount brackets.

[B] - Tighten #8-32 set screw [6] on each bracket, making sure it is fully bottomed out against the surface mount bracket to fix the fixture in place. When using rows, leave these screws loose until all fixtures have been installed on the ceiling.

[C] - Adjust power cable [7] by pushing it from the side into the J-box.

Recommanded mounting points

Standalone

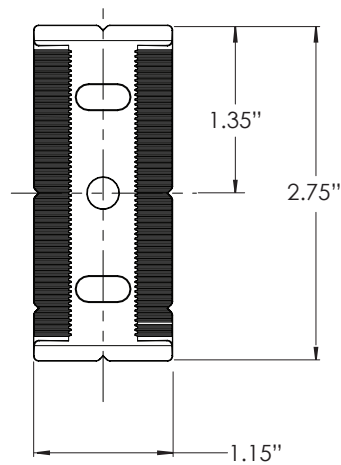


DIMENSION	MOUNTING POINTS DISTANCE						
	2'	3'	4'	5'	6'	7'	8'
A (max) *	19.12"	31.12"	42.62"	54.62"	66.62"	78.62"	90.62"
Overall	24.98"	36.98"	48.48"	60.48"	72.48"	84.48"	96.48"

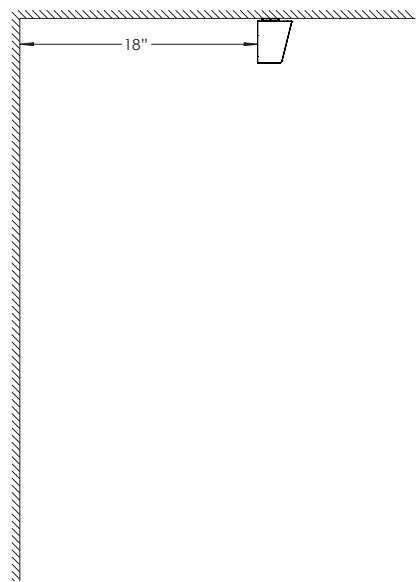
Adjustable

2,3,4,5,6' two mounting brackets. 7 and 8', three mounting brackets with the middle one centered.

Mounting ceiling block



Installation

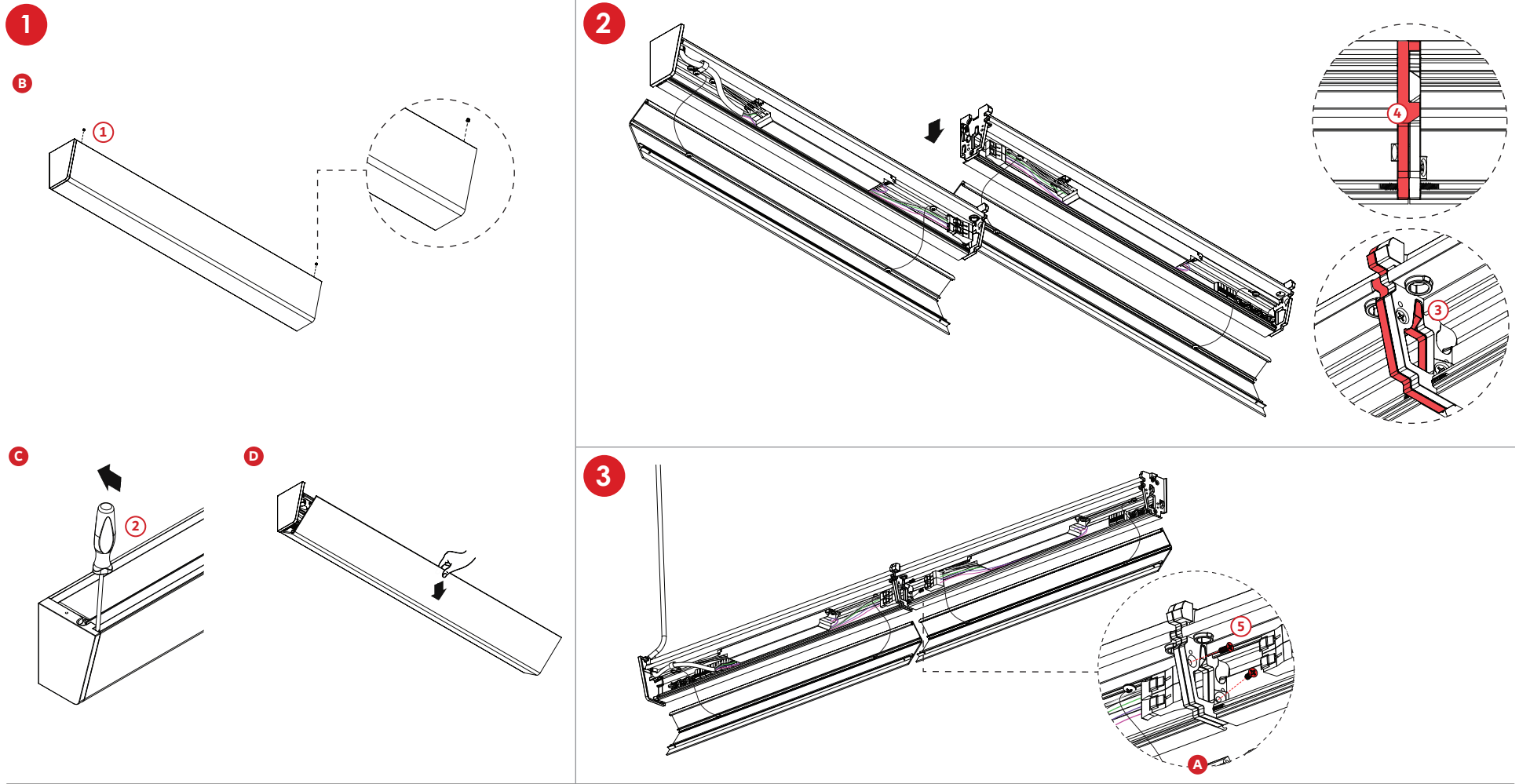


Fixture must be installed at a distance from the wall of 12-18" (recommended 18").

INSTALLATION STEPS

**WARNING:** Risk of fire and electrical shock - Fixture to be installed by qualified electrician according to local codes and ordinances.

**WARNING:** Ensure proper handling of LEDs to limit common problems including: broken connection, loose wiring and damage from electrostatic discharge.



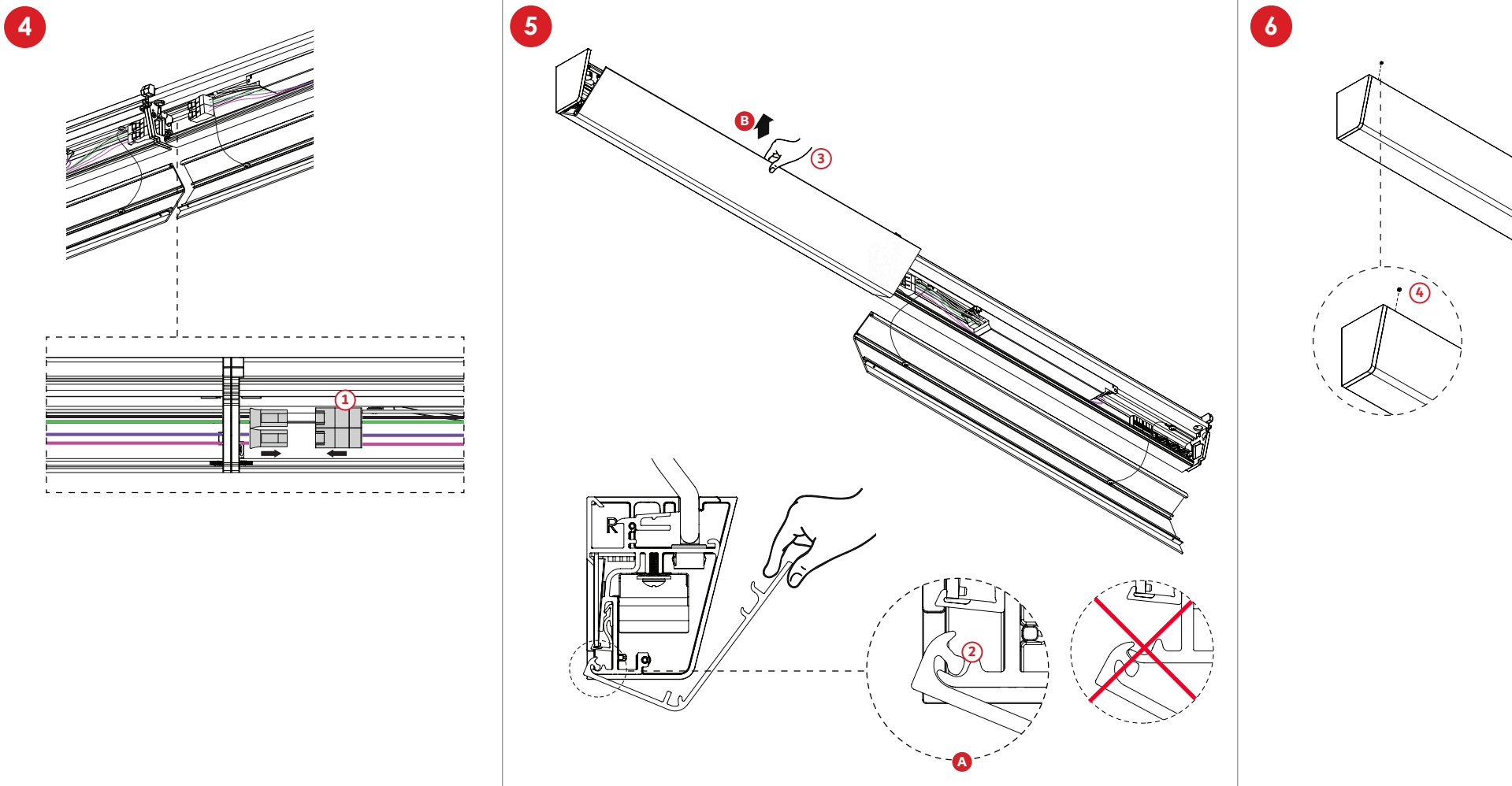
## INSTALLATION STEPS

**WARNING:** Risk of fire and electrical shock - Fixture to be installed by two qualified electricians according to local codes and ordinances.  
**WARNING:** Ensure proper handling of LEDs to limit common problems including: broken connection, loose wiring and damage from electrostatic discharge.

- 1 ROWS**  
**[A]** - When rows are ordered, hang the first fixture as it was a standalone fixture. Attach surface mount brackets to the ceiling for next fixtures following mounting point distances. Refer to page 4.  
**[B]** - Unfasten the two set screws (included) **[1]** in the inner face of the cover. Keep the set screws aside for the cover installation.  
**[C]** - Insert a flat screw driver (by others) **[2]** into the front cavity of the endcap and push it on the back of the fixture to unlock the cover. Repeat on the other side of the fixture.  
**[D]** - Pull the cover to slowly remove it. Note that the cover is held by retaining cables. Do not remove the retaining cables.

- 2** **[A]** - Hang the joiner cavity **[3]** of the following fixture onto the pins **[4]** of the previous fixture.

- 3** **[A]** - Secure with two 6-32 flat head screws (included) **[5]** as shown.  
**[B]** - Lift the fixture and follow step 2 of page 4 to fix the fixture to the ceiling bracket.



## INSTALLATION STEPS

**WARNING:** Risk of fire and electrical shock - Fixture to be installed by two qualified electricians according to local codes and ordinances.  
**WARNING:** Ensure proper handling of LEDs to limit common problems including: broken connection, loose wiring and damage from electrostatic discharge.

### 4 ROWS

**[A]** - Connect electrical wire harnesses **[1]**.

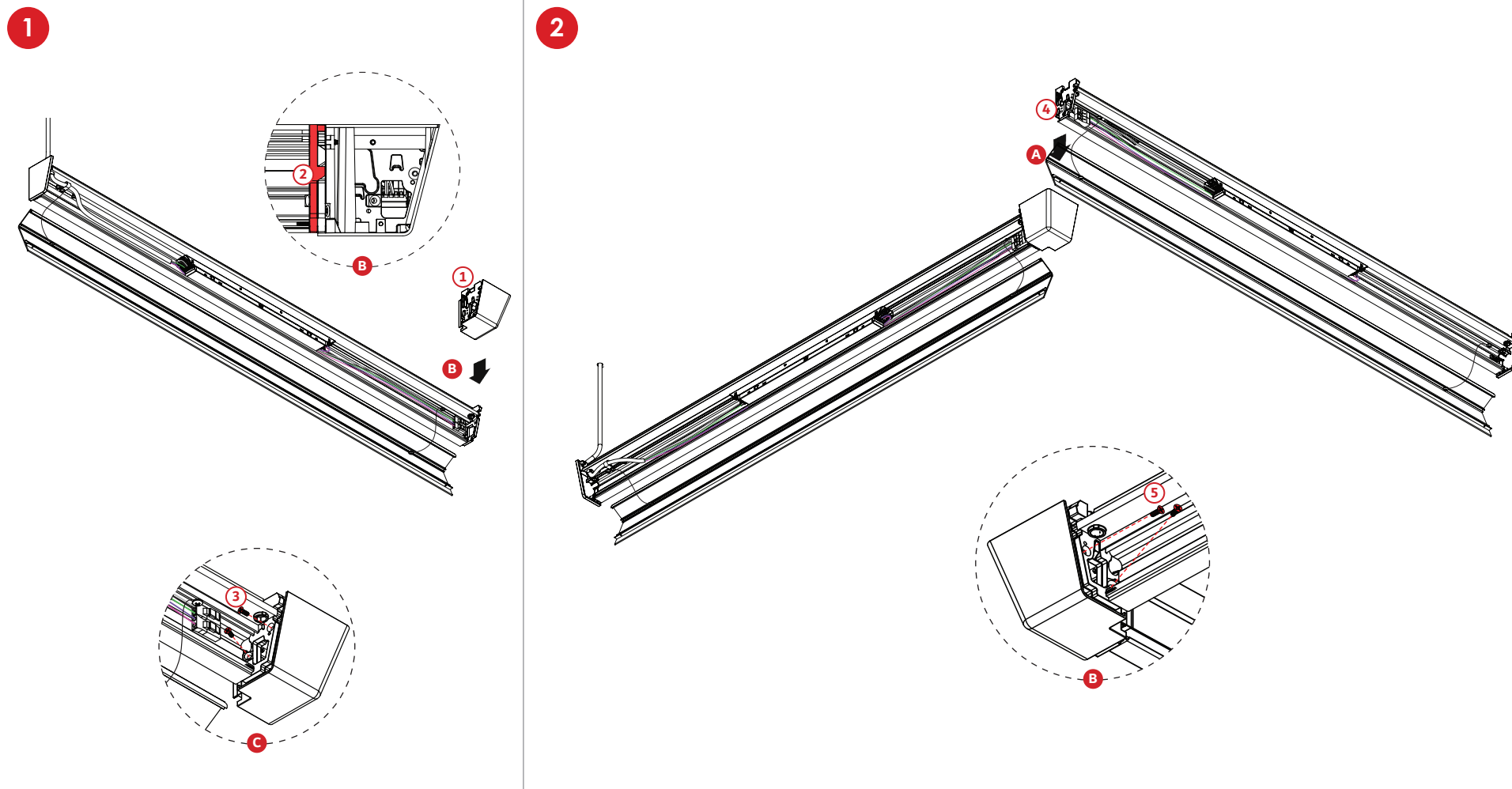
### 5

**[A]** - Place the cover bottom pivot pin **[2]** into the C-channel on the bottom back of the fixture. Make sure the pivot pin is well sits in its channel as indicated.

**[B]** - Hold the cover front flange **[3]** in the center and lift the cover by pulling and lifting it to be sure the pivot pin stays in its channel. Push on the cover to lock it in place.

### 6

**[A]** - Fasten the two set screws (included) **[4]** in the inner face of the cover.



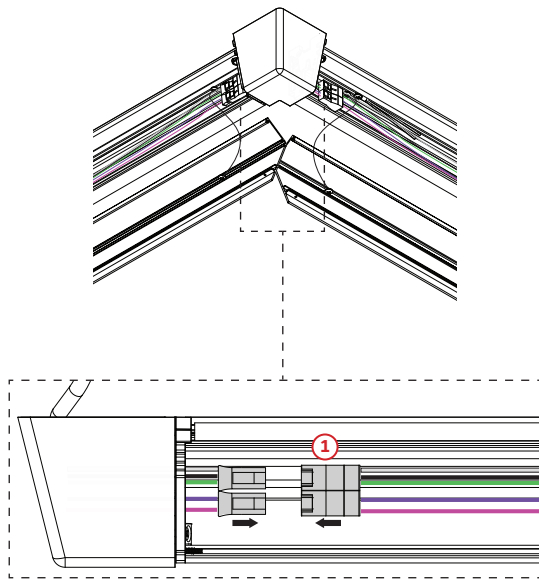
## INSTALLATION STEPS

**WARNING:** Risk of fire and electrical shock - Fixture to be installed by two qualified electricians according to local codes and ordinances.  
**WARNING:** Ensure proper handling of LEDs to limit common problems including: broken connection, loose wiring and damage from electrostatic discharge.

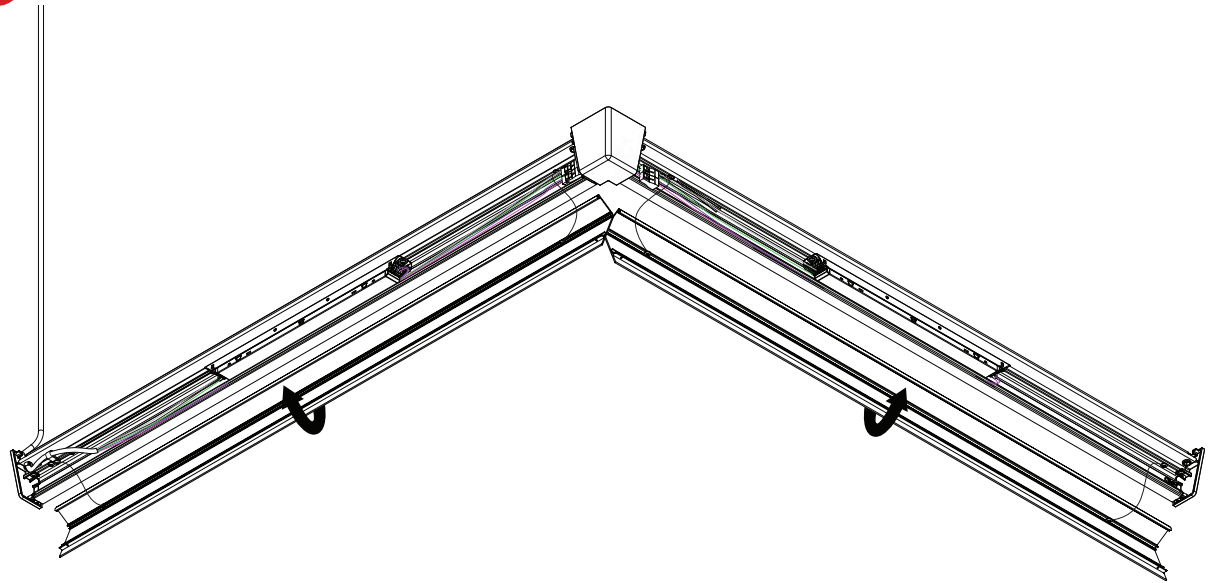
- 1 PATTERN**  
**[A]** - When pattern is ordered, hang the first fixture as it was a standalone fixture. Attach surface mount brackets to the ceiling for next fixtures following mounting point distances. Refer to page 4. Remove cover as indicated on page 6.  
**[B]** - Hang the joiner cavity **[1]** of the following fixture onto the pins **[2]** of the previous fixture.  
**[C]** - Secure with two 6-32 flat head screws (included) **[3]** as shown.  
**[D]** - Lift the fixture and follow step 2 of page 4 to fix the fixture to the ceiling bracket.

- 2** **[A]** - Hang the next fixture to the joiner cavity **[4]**.  
**[B]** - Secure with two 6-32 flat head screws (included) **[5]** as shown.

3



4



## INSTALLATION STEPS



**WARNING:** Risk of fire and electrical shock - Fixture to be installed by two qualified electricians according to local codes and ordinances.  
**WARNING:** Ensure proper handling of LEDs to limit common problems including: broken connection, loose wiring and damage from electrostatic discharge.

3

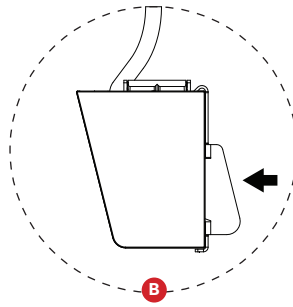
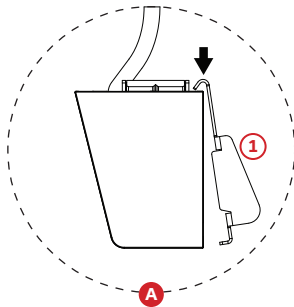
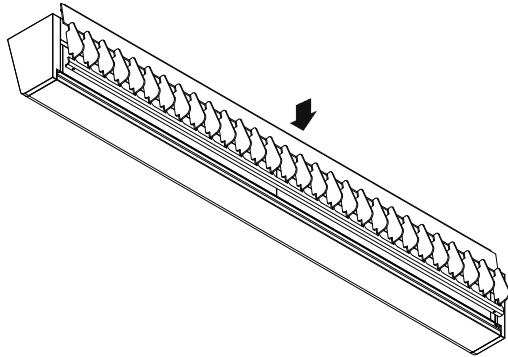
### PATTERN

[A] - Connect electrical wire harnesses [1] on both sides of the corner.

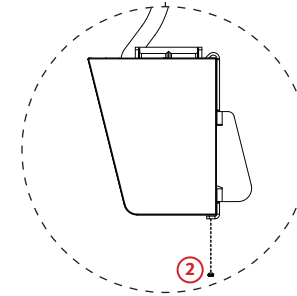
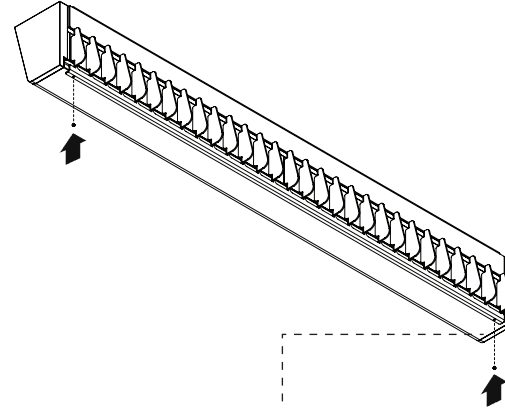
4

[A] - Install cover as shown on page 7.

1



2



## INSTALLATION STEPS



**WARNING:** Risk of fire and electrical shock - Fixture to be installed by two qualified electricians according to local codes and ordinances.

**WARNING:** Ensure proper handling of LEDs to limit common problems including: broken connection, loose wiring and damage from electrostatic discharge.

### 1 LOUVER

[A] - Hook the louver [1] on the top rear part of the fixture.

[B] - Make sure the louver is well flat with the back surface.

### 2

[A] - Fasten the two bottom set screws [2] until it contacts the bottom surface of the fixture. Do not over torque.